

List of Works

The Philippine Pavilion: *The Spectre of Comparison* Biennale Arte 2017

No Pain Like This Body

Installation with ruby-red neon
(reproduction)

2010/2017

size: approx. 140 x 61 cm (x 2)

artist: Lani Maestro



these Hands

Installation with blue neon
(reproduction)

2017

size: approx. length: 700cm

artist: Lani Maestro



meronmeron

Installation, wood benches

site-specific installation

2017

size: approximately 2 meters long /

bench/variable sizes

artist: Lani Maestro



Torta Imperiales

oil on canvas

2017

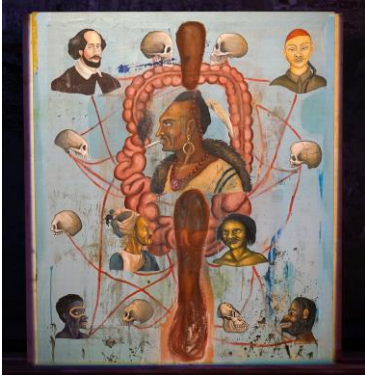
commissioned work

size: 600 cm x 400 cm (2 works)

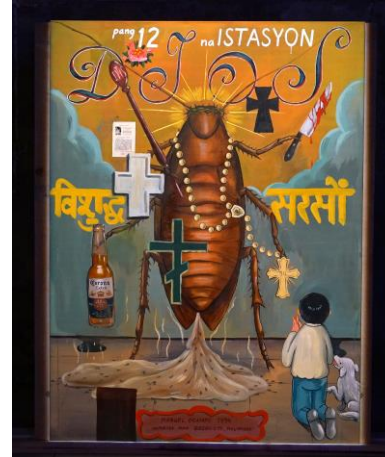
artist: Manuel Ocampo



Creme de la Creme
oil on canvas
1995
size: 189.5 x 160.5cm
artist: Manuel Ocampo



Twelfth Station (12 na Istasyon)
Oil on canvas
1994
size: 173 x 127cm
artist: Manuel Ocampo



Cooks in the Kitchen
Oil on linen (Diptych)
1993/1997
Size: 95.4 x 120 in / 242.4 x 304.8 cm
artist: Manuel Ocampo

